



Icebreaker – Galaxy LED Bulkhead

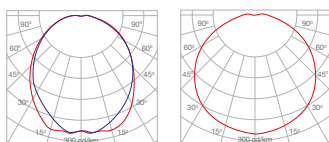


- White Trim Clear Diffuser
- Chrome Trim Opal Diffuser

Dimensions, 2 sizes: **Weight:**
 Mini: Ø 245 x 65mm 0.5kg
 Large: Ø 325 x 70mm 0.85kg

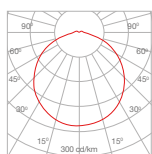
Mounting type:

- Wall Interior
- Ceiling



Mini Clear

Mini Opal



Opal

Photometric files at www.fernhoward.com

A slim decorative LED luminaire that achieves a very low profile by integrating a reflective surface geartray within the body to produce a timeless, clean and simple design. A white or chrome decorative trim creates an appealing halo of light on the mounting surface.

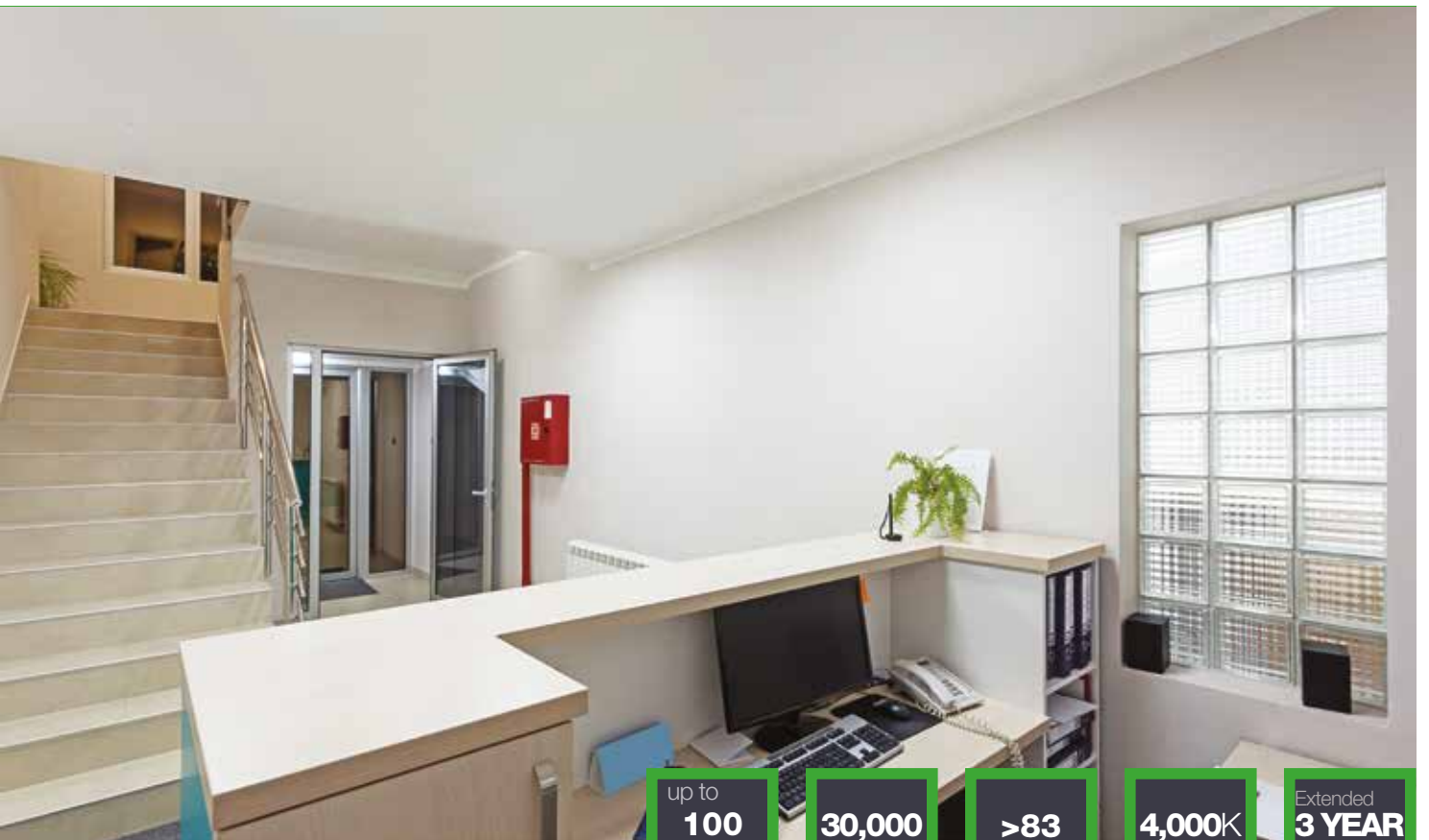
The Icebreaker LED is available in two sizes, Ø245mm and Ø325mm.

- Energy efficient LED geartray with a life span of 30,000 hours (L70)
- Available in two sizes - 325 and 245mm diameter
- Robust polycarbonate body with a decorative trim, available in white or chrome
- Opal polycarbonate diffuser (Ø245mm available in clear or opal)
- Also available without trim

Simple to install and use

- Clip-in diffuser without any screws
- LED geartray
- BESA box fixing points for easy cable entry
- Wall or ceiling mountable
- Interior use





up to
100
Lm/W

30,000
Hours
L70

>83
CRI (Ra)

4,000K
Colour
Temperature

Extended
3 YEAR
Warranty
Register with us

Ordering Guide

Standard Product Code	Light Management Options Suffix*										Performance Data		
	Trim Options	Diffuser Options**	DALI	Dimming	Corridor Function	3hr Emergency	Self-Test	DALI Emergency	Microwave Sensor	Photocell	Lumen Output Lm	Wattage W	Efficacy Lm/W
Icebreaker Mini Galaxy LED													
FHBL-20-075	HW / HC / W	CL	-	-	CF	-	-	-	MS	-	1,100	11	100
	HW / HC / W	OP	-	-	CF	-	-	-	MS	-	750	11	68
Icebreaker Galaxy LED													
FHBL-20-095	HW / HC / W	OP	-	-	CF	EM	-	-	MS	-	900	14	64



Lumen Output in EM:
Opal diffuser - 230Lm

Example Code: Icebreaker Mini 11W, Chrome Trim, Clear with Corridor Function and Microwave Sensor

*CF is only available in combination with MS

**MS cannot be combined with EM

**Available with White (HW) or Chrome (HC) trim or without trim (W)

